



## Quabbs Road Drybrook, GL17 9JD

£495,000



This exceptional Collier and Brain house showcases quality craftsmanship throughout, featuring beautiful honey tinted Ivory Coast hardwood internal ledge-and-brace latch doors, matching architraves and skirtings, and a calming neutral décor enhanced by underfloor heating and soft, light carpets. The spacious layout includes four generous bedrooms—two with stylish En-suite bathrooms—alongside a further high-quality family bathroom and a separate cloakroom, offering superb convenience for family living or hosting guests. This home

The heart of the home is the impressive kitchen, complete with built-in appliances and ample workspace, complemented by a separate utility room for added practicality. A standout feature is the expansive, light-filled studio, offering remarkable versatility; it could serve as an inspiring creative space, a home office, or be adapted into a self-contained Annexe for multi generational living.

Outside, the property continues to impress with an attached garage, extensive parking suitable for multiple vehicles including a motorhome, and far-reaching countryside views to the rear that create a peaceful and picturesque backdrop.

This is a rare opportunity to secure a beautifully finished home with generous space, thoughtful design, and exceptional flexibility.

overall 180 square meters or 1937.5 square foot

Main photo is of the rear.



#### Entrance Porch :

Glazed windows and door.

#### Entrance Hallway :

Stairs to first floor, understairs recess, window to front.

#### Living Room :

18'2 x 12'11 (5.54m x 3.94m)

Twin patio doors and windows to rear taking in the countryside views, wall mounted electric fire, wall lights.

#### Kitchen :

11'11 x 12'10 (3.63m x 3.91m)

Quality fitted kitchen with matching wall and base storage units, 5 ring gas hob, electric oven and grill, extractor hood, integrated fridge and dishwasher, tiled floor, double glazed window to rear,

#### Utility Room :

10'0 x 7'0 (3.05m x 2.13m)

Fitted with matching wall and base storage units, sink unit with mixer tap, tiled floor, plumbing for washing machine, space for fridge/freezer, door to outside and double glazed window to rear, wall mounted gas boiler.

#### Studio :

14'9 x 20'3 (4.50m x 6.17m)

High vaulted ceiling with two roof lights, double glazed window and door to front aspect, be-spoke fitted cupboards, tiled floor, sink unit. Door to Garage.

#### Cloakroom :

4'9 x 2'11 (1.45m x 0.89m)

Low level WC, double glazed window to rear, tiled floor.

#### Bedroom :

14'10 x 9'0 (4.52m x 2.74m)

Double glazed window to front, be-spoke fitted wardrobes.

#### En-Suite :

Shower cubicle with fixed seat, low level WC, pedestal wash hand basin, tile floor and walls, double glazed window to side, extractor fan.

#### Bedroom/Dining Room :

8'9 x 15'3 (2.67m x 4.65m)

Double glazed window to front. doors to kitchen and hallway.

#### Family Bathroom :

8'4 x 5'10 (2.54m x 1.78m)

White suite, panelled bath with shower over, low level WC, pedestal wash hand basin, tiled floor and walls, heated towel radiator.

#### First Floor Landing :

Spacious built in airing cupboard with access to eaves. Sky light.

### Bedroom :

14'7 x 19'6 (4.45m x 5.94m)

Double glazed dormer window to rear, sky light to front, double glazed window to side, fitted cupboards and fitted wardrobes.

### En-Suite :

3'3 x 7'3 (0.99m x 2.21m)

Shower cubicle, low level WC, wash hand basin, tiled floor and walls, extractor fan.

### Bedroom 4 :

8'9 x 16'10 (2.67m x 5.13m)

Double glazed dormer window to rear, sky light to front, storage area and access to eaves.

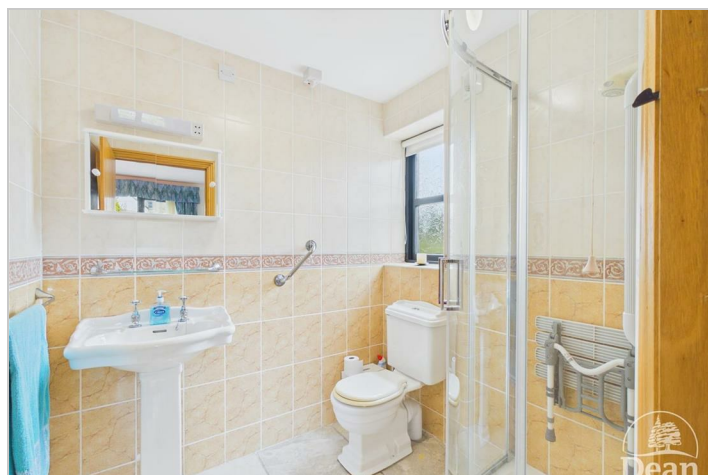
### Attached Garage :

11'0 x 16'6 (3.35m x 5.03m)

Roller door, power and light.

### Outside :

The property enjoys excellent access all around, with a generous front driveway providing ample parking for multiple vehicles, including a motorhome. To the rear, the garden offers a mix of raised decking, gravelled seating areas and well-kept raised beds, creating a versatile and low-maintenance outdoor space. Additional features include a summer house and shed, perfect for storage or leisure. The garden backs onto open farmland, offering far-reaching countryside views and a wonderfully peaceful backdrop.



Consumer Notes: Dean Estate Agents Ltd have prepared the information within this website/brochure with care and co-operation from the seller. It is intended to be indicative rather than definitive, without a guarantee of accuracy. Before you act upon any information provided, we request that you satisfy yourself about the completeness, accuracy, reliability, suitability or availability with respect to the website or the information, products, services, or related graphics contained on the website for any purpose.

These details do not constitute any part of any Offer, Contract or Tenancy Agreement.

Photographs used for advertising purposes may not necessarily be the most recent photographs, although every effort is made to update photographs at the earliest opportunity. Any reliance you place on such information is therefore strictly at your own risk. All photographic images are under the ownership of Dean Estate Agents Ltd and therefore Dean Estate Agents retain the copyright.

You must obtain permission from the owner of the images to reproduce them.

Tenanted Property – we are not always able to show the most recent condition of a property due to tenants' privacy and we may choose to show the photographs of the property when it was last vacant to at least allow clients some idea of the internal condition. Therefore, we would of course, urge you to view before making any decisions to purchase or rent the property and before any costs.

Energy Performance Certificates are supplied to us via a third party and we do not accept responsibility for the content within such reports.

PRC Certificates – Some ex-local authority properties have been repaired in recent years using the PRC Scheme wherein a certificate has been produced by a qualified property engineer. This certificate does not imply the suitability for a mortgage approval and you must satisfy yourself of the work carried out that may meet your lenders criteria.

As with leasehold property or new build development sites, you are likely to be responsible for a contribution to management charges and/or ground rent or a contribution to the development service charge. Please enquire at the time of viewing.

You may also incur fees for items such as leasehold packs and, in addition, you will also need to check the remaining length of any lease before you complete a mortgage application form.

Please ask a member of our team for any help required before committing to purchase a property and incurring expense.

## Road Map



## Hybrid Map



## Terrain Map



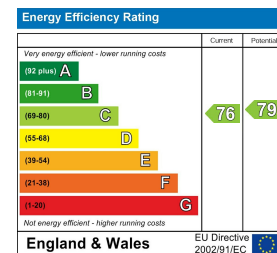
## Floor Plan



## Viewing

Please contact our Cinderford Office on 01594 825574 if you wish to arrange a viewing appointment for this property or require further information.

## Energy Efficiency Graph



These particulars, whilst believed to be accurate are set out as a general outline only for guidance and do not constitute any part of an offer or contract. Intending purchasers should not rely on them as statements of representation of fact, but must satisfy themselves by inspection or otherwise as to their accuracy. No person in this firm's employment has the authority to make or give any representation or warranty in respect of the property.